

WATERWAY RULES

STAY AWAY FROM THE ENTRANCE

All children under the age of 10 years must wear an approved PFD 1, 2 or 3 while in a recreational vessel that is underway.

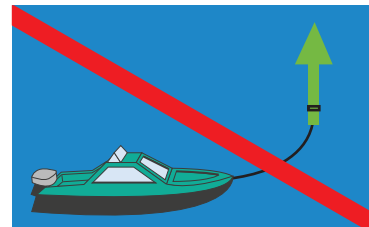
If you fall overboard slowly and repeatedly raising and lowering arms outstretched to each side - indicating distress and need of assistance



DON'T DRINK AND BOAT

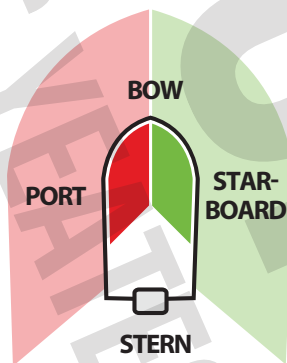
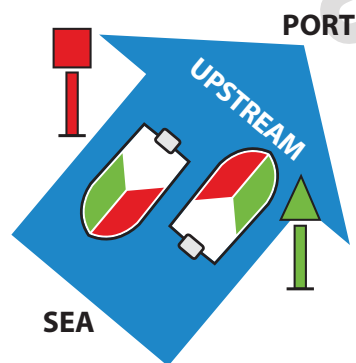
- .00 blood alcohol limit applies for under 21
- .05 blood alcohol limit applies for over 21

IT IS ILLEGAL AND DANGEROUS TO TIE UP TO NAVIGATIONAL AIDS AND ANCHOR IN CHANNELS



Direction of buoyage

In a port, harbour, river, estuary or other waterway the port mark (red) should be passed on the vessel's port (left) side.

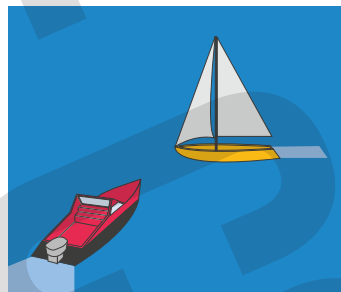


WARNING

It is an offence to allow a person to extend any part of their body over the bow, sides or stern of a powerboat that is underway.

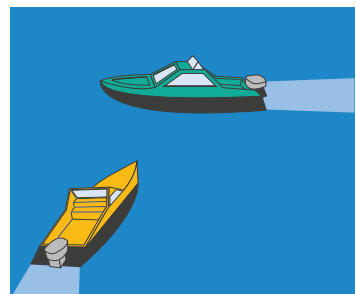
Power and sail vessels

Power-driven vessels shall keep out of the way of sailing vessels and rowing boats.



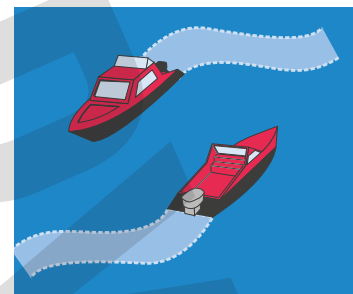
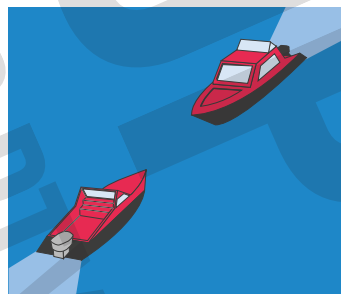
Power-driven vessels crossing

When two power-driven vessels are crossing, the vessel with the other on its starboard side shall keep out of the way and avoid crossing ahead of the other vessel. The other vessel must maintain its course and speed until it is apparent that the vessel required to give way is not take appropriate action.



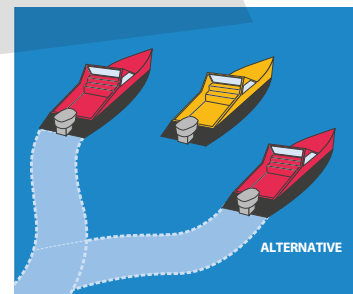
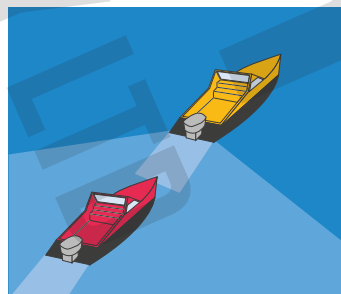
Power-driven vessels meeting head-on

Power-driven vessels meeting head-on or nearly head-on shall alter to starboard so that each may pass on the port side of each other.



In narrow channels or channel approaches

All vessels in narrow channels shall keep as far as practicable to the starboard side of the channel



AREAS SHADED IN RED ARE DANGEROUS AND CLOSED TO ALL HIRE BOATS.

PLEASE -

- Pull up anchor & un-tie all mooring ropes before starting engine
- Do not anchor near rocks - any damage to vessel or loss/damage of equipment is your responsibility.
- Do not clean fish inside the boat
- Use the bait board for cutting bait - not the engine box cover or the seats

ALL HIRE BOATS MUST TURN RIGHT WHEN LEAVING THE NORTH ARM

